



Installation Instructions

Concurrent version

How to Install ScheduleCleaner™?

To start the installation of ScheduleCleaner™ double-clicking on the setup file or use the “Run” command from Start menu.

In order to install the application you will need Administrator privileges on your device.

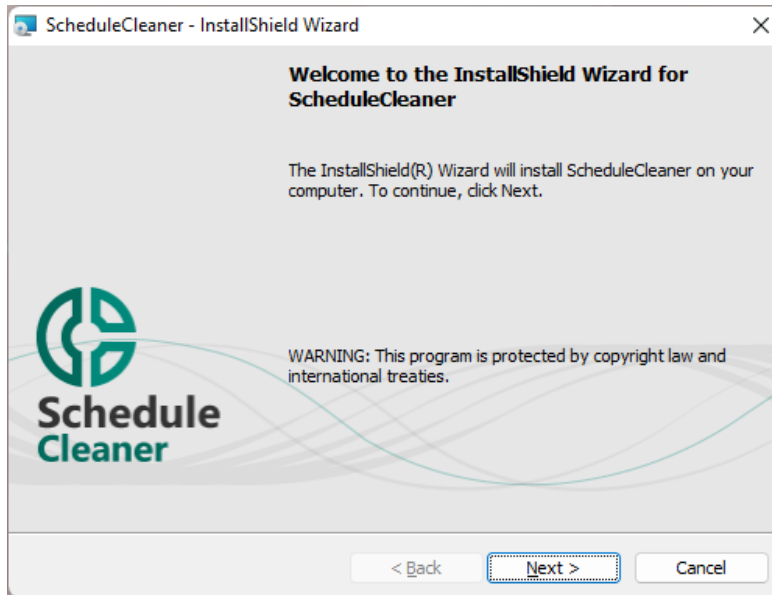
Note: ScheduleCleaner™ runs on all supported version of Windows.

Important Note: After installing the ScheduleCleaner Concurrent, on First Start, the user should be known to use Run as Admin option. This is obligatory when the Change License is used to upgrade version or reinstall application.

Server Installation

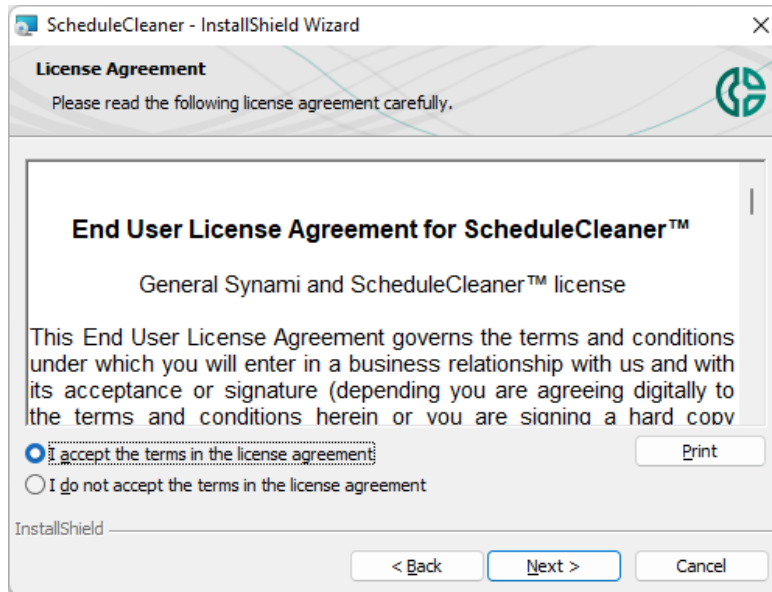
Step 1: Setup Welcome

Once setup is run, the initial preparations for installation begins. The setup wizard will display the Welcome dialogue box from where you can select **Next** to continue, or Cancel if you want to exit the setup.



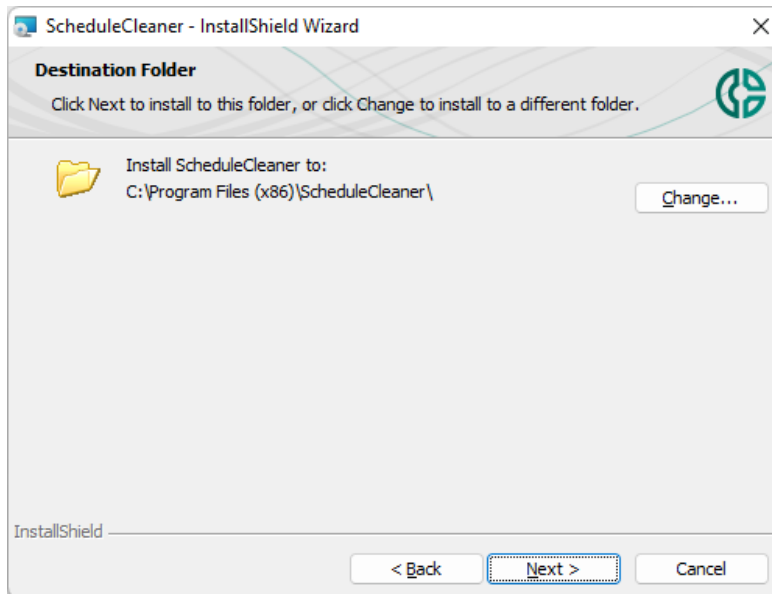
Step 2: License Agreement

License agreement shows the end user license agreement for using ScheduleCleaner™. Read it carefully and if you agree select **"I accept the terms in the license agreement"**, otherwise, Cancel the installation wizard.



Step 3: Destination folder

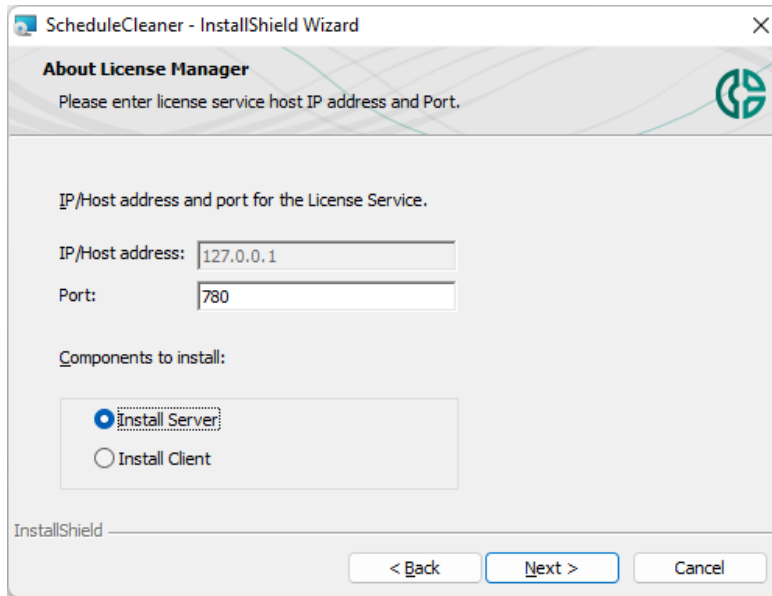
Select a destination folder where ScheduleCleaner™ to be installed on your PC. By default, it is installed in: **C:\Program Files\ScheduleCleaner**. If you want to install application on another location click on the **Change** button.



Step 4: IP Address for License Manager

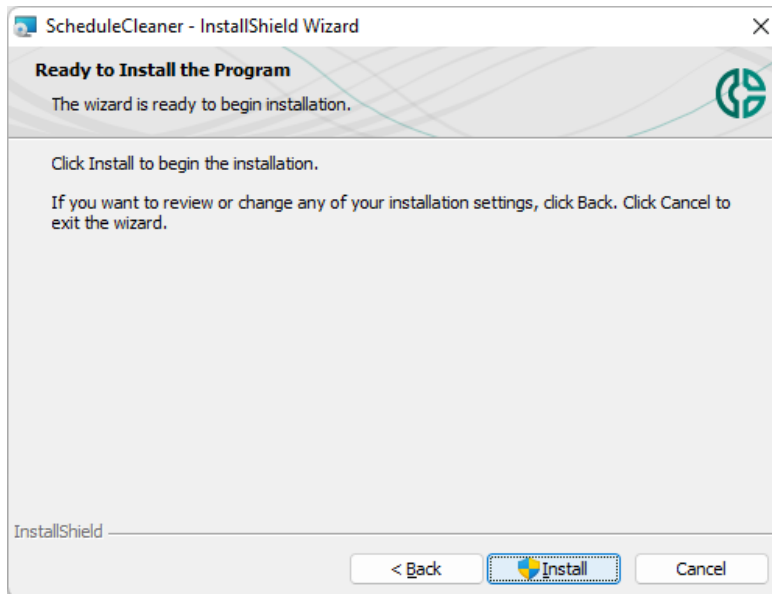
After selecting the language for ScheduleCleaner, you will need to enter the computer's IP address, on which the application is installed. Under IP/Host address field you can see either the IP address or the

Host address (DNS) of the Server (License Manager). Insert the Port number. Under Components, please choose "Install Server" and click on the Next button.



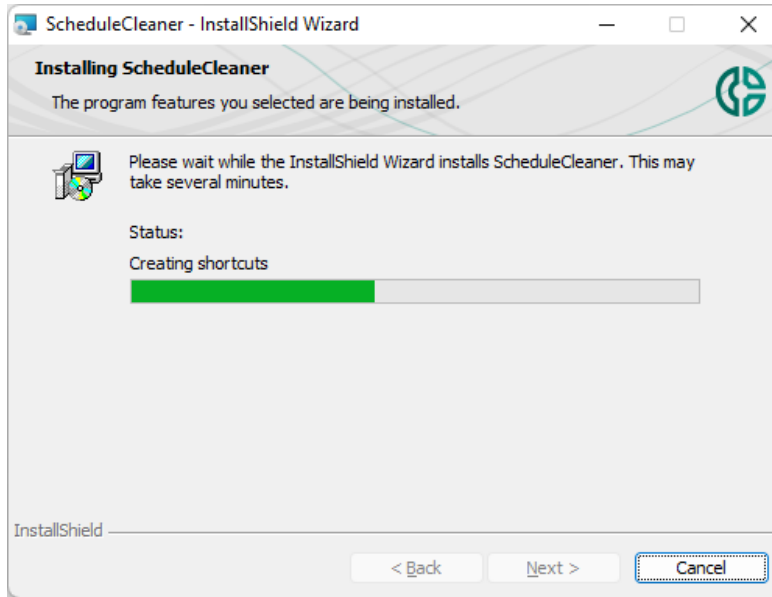
Step 5: Ready to install the program

When you have defined with your setup preferences for ScheduleCleaner™ click on **Install** button or go Back to change any setting.



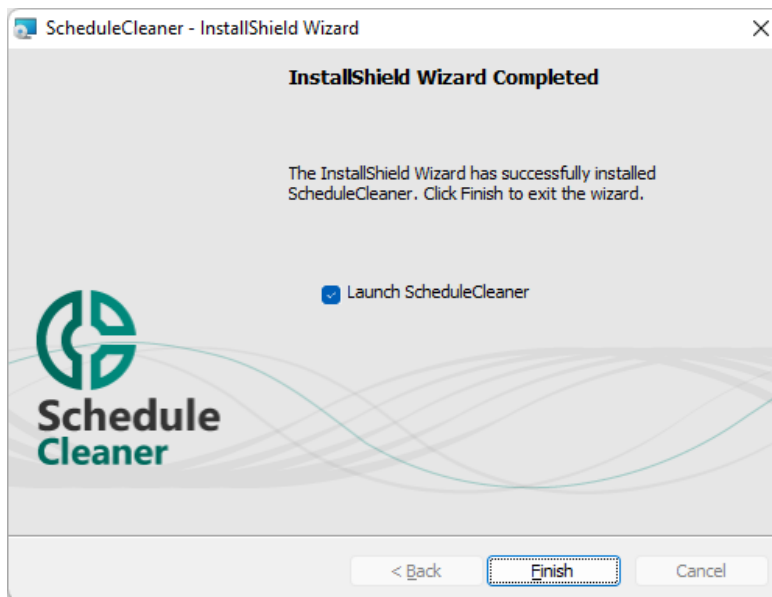
Step 6: Progress

You can see the progress in the Installation dialog. You can stop the installation by click on Cancel button. This will roll back the installation and remove all data related to this product on your device.



Step 7: Setup Completed

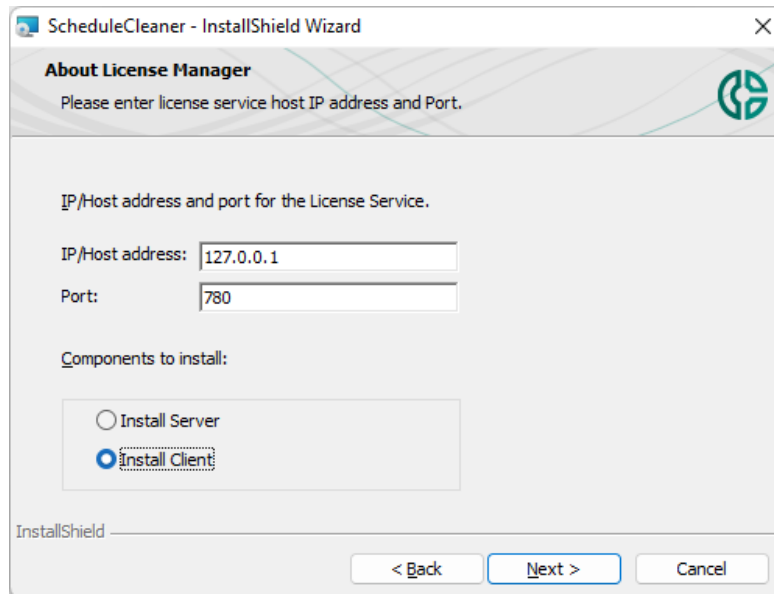
Once installation is completed you will get a message that application is successfully installed on your computer. Click **Finish** to open ScheduleCleaner™.



Client Installation

Step 1: Local Client Installation

Repeat the procedure from Chapter 1 and when you come to Step 4, just choose the second option — Install Client. All Other Steps remain the same, except the Activation Screen on the first start for Client would not be prompted.

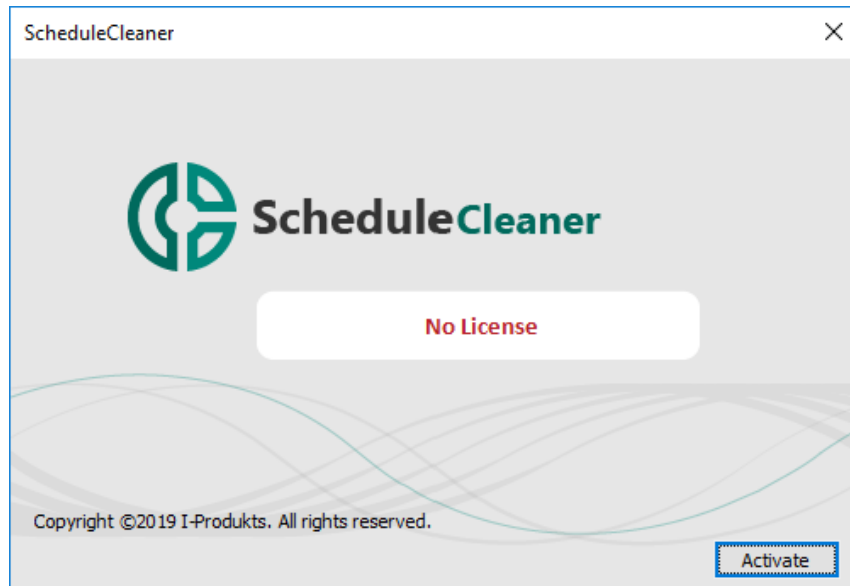


Note: Ask your IT Admin for the IP/Host Address for the PC where the ScheduleCleaner's server is installed.

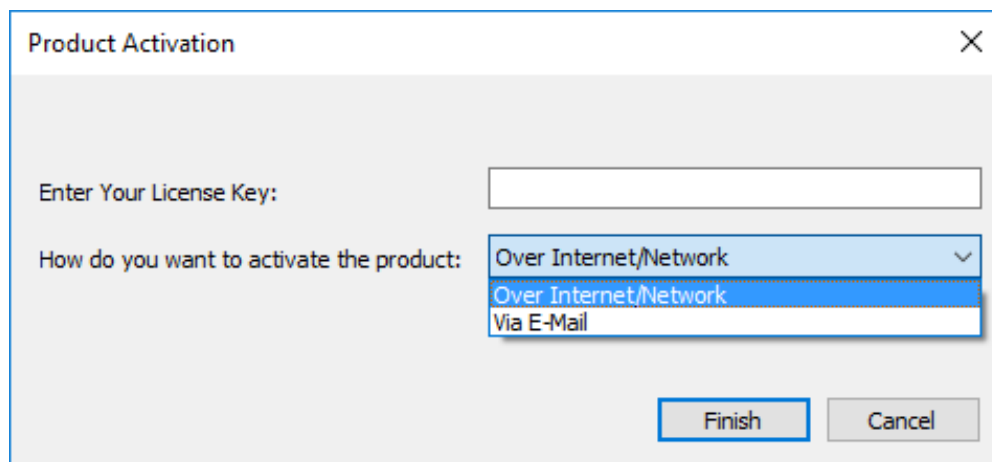
Activating ScheduleCleaner

Step 11: Product Activation

ScheduleCleaner™ trial version can be used up to 15 days. Once trial version has expired, you should activate the application by providing your License key.



Product activation can be performed:



- **Over Internet/Network**
- **Via Email** – send an email at support@ScheduleCleaner.com along with your **Request File** that is automatically generated by the application and wait our support team to send you the **Response File** for activation.

Product Activation ×

Please send an email to support@schedulecleaner.com with your license request data and we will send you the license response activation file.

Generate request file and create email form

Browse...

Import response file to activate the product

Browse...

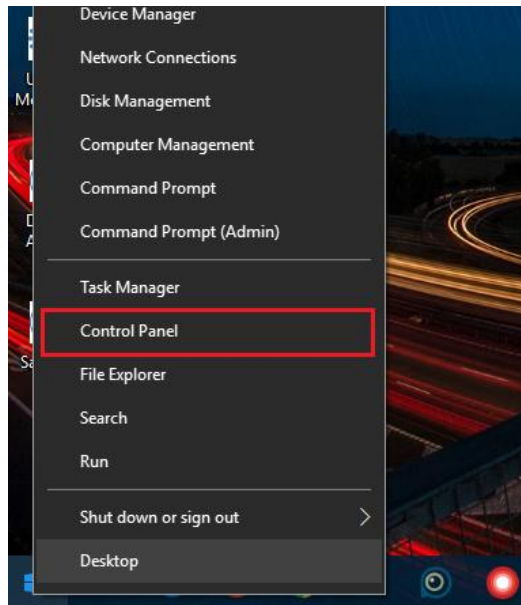
< Back Finish Cancel

Note: If you reinstall the operating system on your device, change any computer components or change your computer, you will require a new installation of the product. In this case, please contact our Customer Service representatives on support@ScheduleCleaner.com to help you reactivate your license for ScheduleCleaner™.

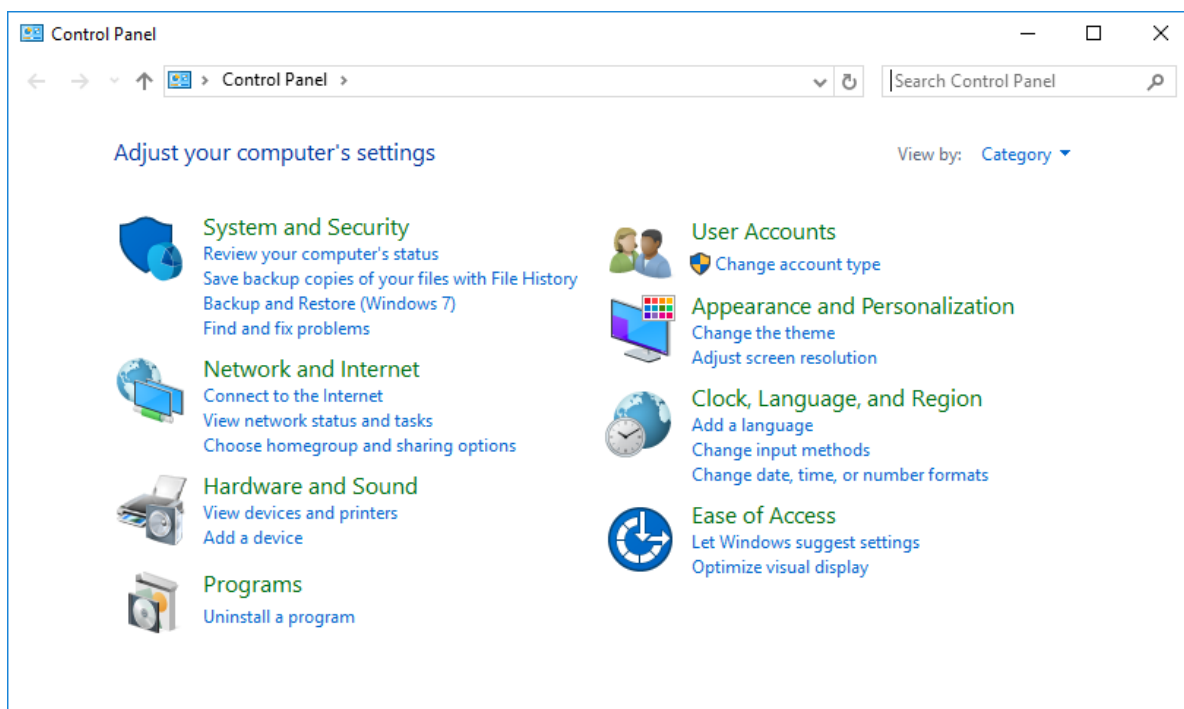
How to Uninstall ScheduleCleaner™?

To uninstall ScheduleCleaner™ follow these steps:

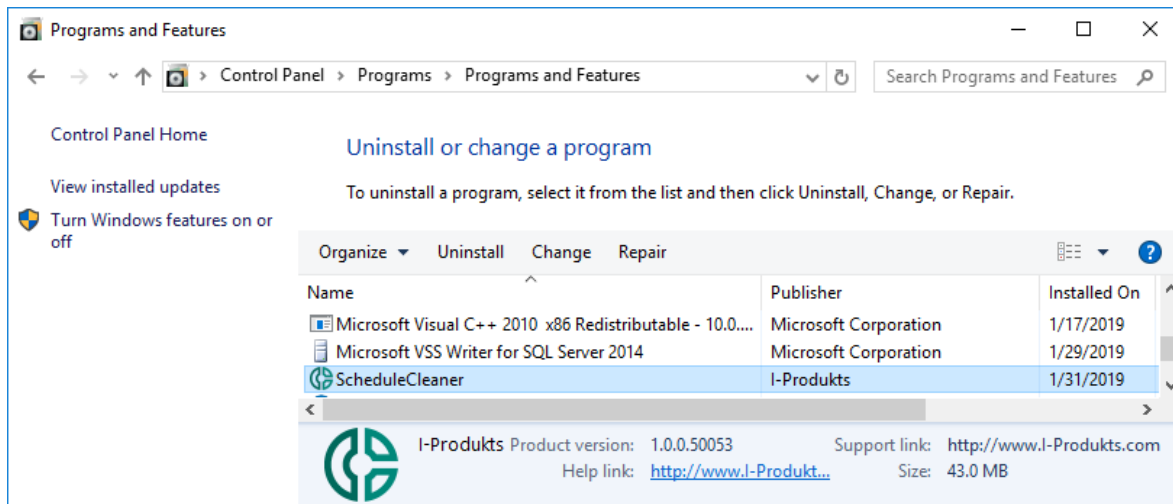
1. Right-click the **Start** button and choose the **Control Panel** from the pop-up menu.



2. When the Control Panel appears go to **Programs** and Features category and choose **Uninstall a Program**.



3. Find the **ScheduleCleaner™**, click once to select it, and then click **Uninstall**.



the \mathbb{R}^n is a linear space over \mathbb{R} with the usual addition and scalar multiplication. The inner product is defined by

$$\langle x, y \rangle = \sum_{i=1}^n x_i y_i \quad (1)$$

where $x = (x_1, \dots, x_n)$ and $y = (y_1, \dots, y_n)$ are vectors in \mathbb{R}^n .

The norm of a vector x is defined by

$$\|x\| = \sqrt{\langle x, x \rangle} = \sqrt{\sum_{i=1}^n x_i^2} \quad (2)$$

The distance between two vectors x and y is defined by

$$d(x, y) = \|x - y\| = \sqrt{\sum_{i=1}^n (x_i - y_i)^2} \quad (3)$$

The angle between two vectors x and y is defined by

$$\cos \theta = \frac{\langle x, y \rangle}{\|x\| \|y\|} \quad (4)$$

where θ is the angle between x and y .

The orthogonal projection of a vector x onto a vector y is defined by

$$\text{proj}_y x = \frac{\langle x, y \rangle}{\|y\|^2} y \quad (5)$$

The orthogonal distance from a vector x to a vector y is defined by

$$d_{\perp}(x, y) = \|x - \text{proj}_y x\| \quad (6)$$

The orthogonal distance from a vector x to a subspace S is defined by

$$d_{\perp}(x, S) = \inf_{y \in S} \|x - y\| \quad (7)$$

The orthogonal distance from a point x to a line L is defined by

$$d_{\perp}(x, L) = d_{\perp}(x, S) \quad (8)$$

where S is the subspace spanned by the direction vector of the line L .

The orthogonal distance from a point x to a plane P is defined by

$$d_{\perp}(x, P) = d_{\perp}(x, S) \quad (9)$$

where S is the subspace spanned by the direction vectors of the plane P .

The orthogonal distance from a point x to a hyperplane H is defined by

$$d_{\perp}(x, H) = d_{\perp}(x, S) \quad (10)$$

where S is the subspace spanned by the direction vectors of the hyperplane H .